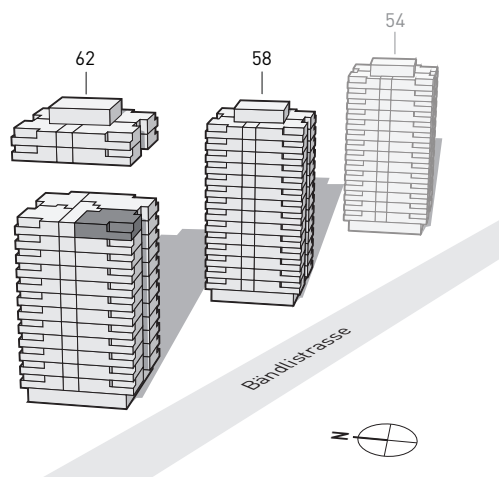


PORTA ZÜRICH

WOHNEN MIT BESTEN VERBINDUNGEN



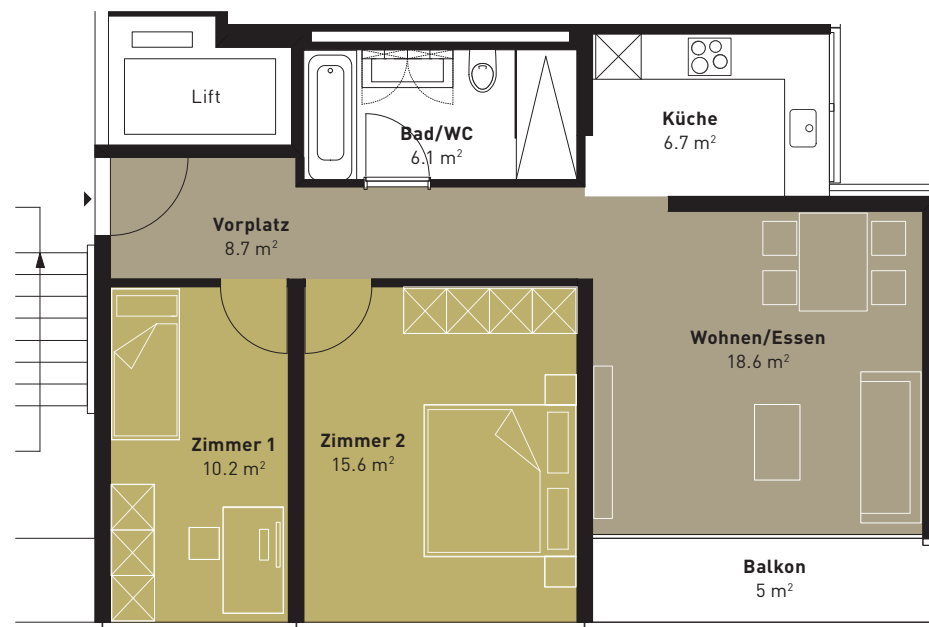
BÄNDLISTRASSE 62 - WOHNUNG 1

12. Obergeschoss




3-ZIMMER-WOHNUNG

Brutto-Wohnfläche: 66 m²

Balkon: 5 m²



BODENBELÄGE

-  Laminat
-  Antico designed Vinyl in Holzstruktur
-  Parkett

