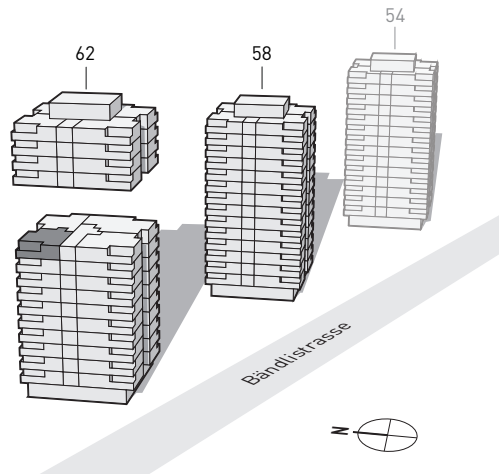


# PORTA ZÜRICH

WOHNEN MIT BESTEN VERBINDUNGEN



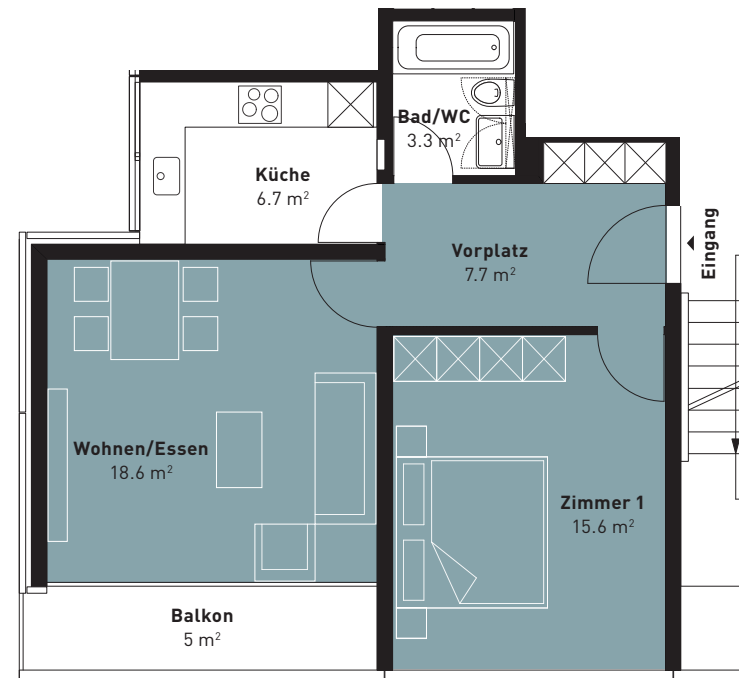
## BÄNDLISTRASSE 62 – WOHNUNG 4

10. Obergeschoss



### 2-ZIMMER-WOHNUNG

Brutto-Wohnfläche: 52 m<sup>2</sup>

Balkon: 5 m<sup>2</sup>



#### BODENBELÄGE

-  Laminat
-  Antico designed Vinyl in Holzstruktur
-  Parkett

