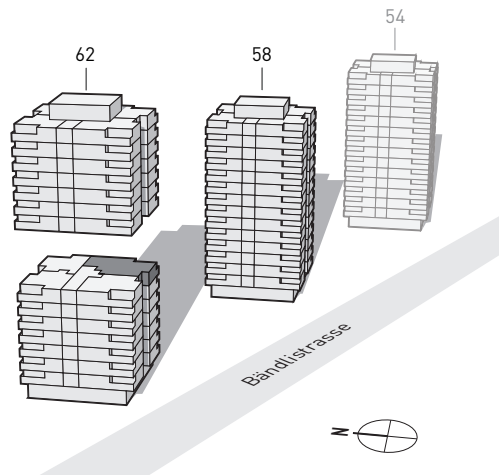


PORTA ZÜRICH

WOHNEN MIT BESTEN VERBINDUNGEN



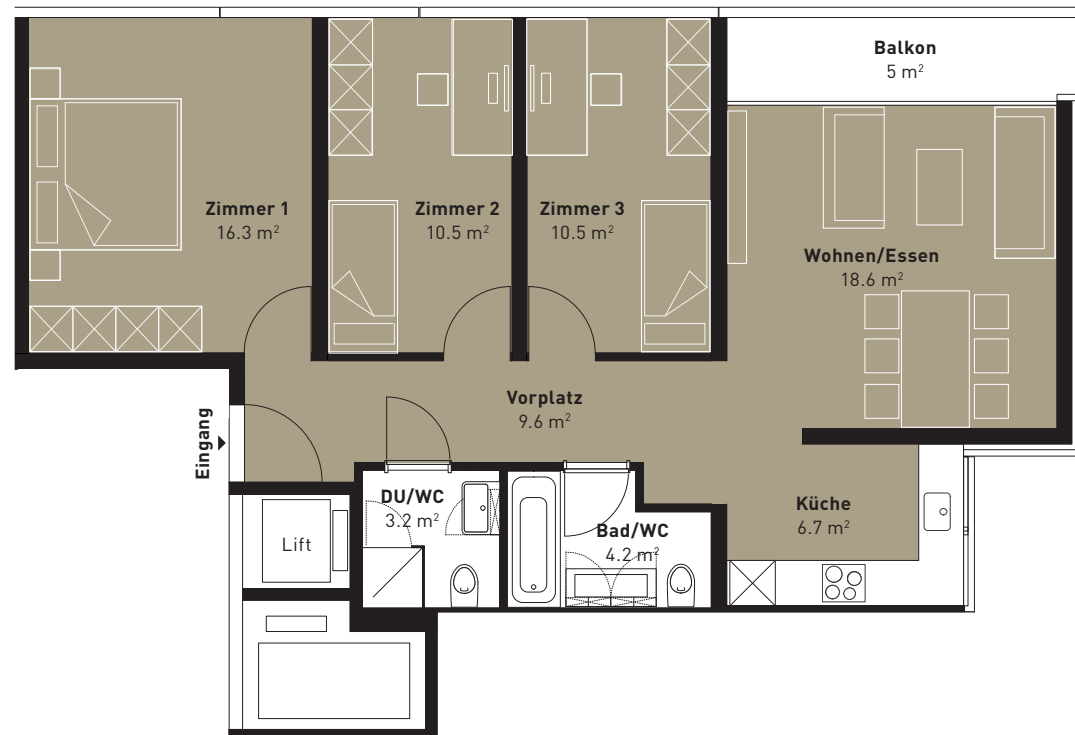
BÄNDLISTRASSE 62 – WOHNUNG 2

7. Obergeschoss



4-ZIMMER-WOHNUNG

Brutto-Wohnfläche: 80 m²

Balkon: 5 m²



BODENBELÄGE

-  Laminat
-  Antico designed Vinyl in Holzstruktur
-  Parkett

